

B. For International applicants and Brunei Governments In-Services Scheme (LDP)

1. Complete your application by going to Politeknik Brunei Admission System (PBAS) via this link: <https://pbas.pb.edu.bn>. Please ensure to have **digital copies** [scanned in colour from original] of the following documents ready:

1. Applicant Passport Sized Photo

FORMAT: JPEG format (*.jpeg, *.jpg, *.png)
MINIMUM RESOLUTION: 500px (width) x 644px (height)
MAXIMUM FILE SIZE: 1MB



2. Identity Card (I.C.) / Passport

FORMAT: As coloured image (*.jpeg, *.jpg, *.png) or PDF (*.pdf)
[NOT black/white or photocopy]
MAXIMUM FILE SIZE: 10MB



3. Certificate / Transcript

- GCE 'O' Level (or equivalent)
- GCE 'A' Level / Diploma / National Diploma / HNTec (if applicable)
- English Language proficiency certificates (IELTS/TOEFL)(if applicable)

FORMAT: As image (*.jpeg, *.jpg, *.png) and compiled into PDF (*.pdf) for multiple pages
MAXIMUM FILE SIZE: 10MB



4. Portfolio (if applicable)

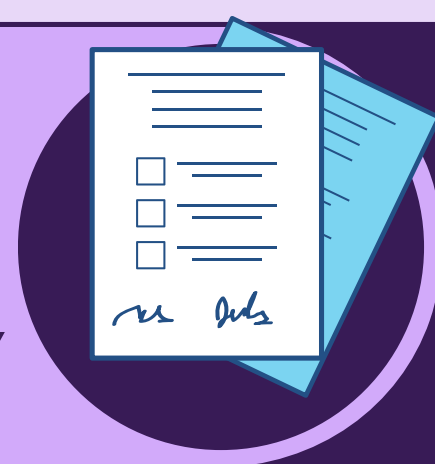
If you are applying for Diploma in Interior Design, you are required to provide a copy of or link to your portfolio.

FORMAT: As image (*.jpeg, *.jpg, *.png) and compiled into PDF (*.pdf) for multiple pages
MAXIMUM FILE SIZE: 10MB



5. Borang A (for In-Service Scheme (LDP) Applicants ONLY)

FORMAT: PDF (*.pdf) or Hardcopy
SUBMIT TO: Politeknik Brunei, Registrar & Secretariat Office,
Block 2E, Ong Sum Ping Condominium



<https://pbas.pb.edu.bn>

More information on the programmes offered is available on PB's website: www.pb.edu.bn
For assistance with PBAS, please contact:

REGISTRAR AND SECRETARIAT OFFICE POLITEKNIK BRUNEI

- 📍 Block 2E, Unit 11-04, Level 11,
Ong Sum Ping Condominium
Bandar Seri Begawan BA1311
- ☎ 223 4466 ext 277 / 223 4451
- 📞 +673 733 5984
- ✉ admission@pb.edu.bn
- 🌐 <https://t.me/RSOPB>

Incomplete application will not be entertained

Applicants who fail to complete and submit Politeknik Brunei Admission System (PBAS) will not be considered by PB.